



bpsglobal

上海威舜仓储工程设备有限公司
BPS Global Holdings (Shanghai) Office

Storage Equipment Manufacturer and
Functional Solutions Provider

倉儲設備製造及功能解決方案專家



Storage Equipment Manufacturer and Functional Solutions Provider 倉儲設備製造及功能解決方案專家

CONTENTS

目錄

Shelving Systems

擱板類貨架

Long Span Shelving

橫樑式中型貨架

Modular Shelving

中托貨架

Flow Racking

流利式貨架

Mobile Shelving

移動式貨架

Angle Steel Shelving

角鋼貨架

Heavy Duty Racking

重型托盤類貨架

Selective Pallet Racking

傳統橫樑式貨架

Drive-in Racking

駛入式貨架

Push-back Racking

壓入式貨架

Live Storage Racking

重力式貨架

VNA Racking

窄巷道貨架

Mezzanine Floor System

閣樓式貨架

Drawer Racking

模具架

AS/RS System

自動化倉庫

Cantilever Racking

懸臂式貨架

Racking Components

貨架配件

About Us

公司特色

Every business has its own characteristics. Our characteristic is to provide comprehensive solutions to our customers through simulation of real business operations. Based on requirements and conditions of our customers on warehousing, sustainability, scheduling, and budgeting, we provide customized solutions to our customers to meet their real demands. Detailed data collection and simulation of solutions will enhance the best storage equipment system for our customers.

We provide premier solutions in

- Layout Planning
- Equipment Service
- Racking Installation, Removal & Relocation
- Automated Material Handling
- Spares & Accessories

Strategic Approach

- High Quality Equipment
- Customized Solutions
- Efficient Project Management

每一個商業都有自己的特色。我們的特色是通過模擬真實的商業和運作發展，做出全面符合客戶需求的方案。我們會根據客戶不同的要求和條件，包括倉儲需求、持續發展、時間和財政等，為他們度身定制符合他們需要的方案。通過數據收集和方案模擬進行，幫助客戶找到最適合他們的倉儲設備系統。

我們提供全方位優質服務

- 倉儲規劃設計
- 倉儲設備
- 貨架安裝、拆卸及重組
- 自動物料搬運系統
- 貨架配件

策略方針

- 高品質設備
- 定制合適方案
- 高效能項目管理

Long Span Shelving 橫樑式中型貨架

Introduction

介紹

The loading capability of this shelving is between those of light-duty and heavy-duty shelving. The post and beams are connected using bolts or through plugging. It is rigid and light. The storage height can be adjusted easily. It is suitable for large-scale production and has become the mainstream shelving for industrial companies because it is low-cost and can be easily transported and installed.

承重介於輕型和重型之間，主柱與橫梁之間採用螺栓或插接組成，這種貨架具有剛性強，貨架自身重量亦較輕，層架高度可自由調節，適合規模化生產。成本低、運輸和安裝便利等優點，目前已是各種工業企業貨架倉庫的主流。

Functions

功能介紹

Plugging shelving with beams, plug-combination beam shelving and stair beam shelving: With wooden, metal or high density chip board installed, the loading capability of this shelving can be 800kg/layer. The height of each layer can be adjusted at a pace of 50mm.

New beam-style medium-duty shelving: The loading capability can be up to 700kg, with optional size of steel, wooden, or high density board.

The dimensions of these products are up to customers' requirements. This kind of shelving is suitable for storage of metal components in manufacturing industry.

插接式橫梁結構，可配合木板和鋼層板及纖維層板，每層承重可達至800kg。層高間距每50mm可調。插接組合橫樑式擱板貨架，採用階梯型橫梁，配合鋼層板或木壓層板使用，層高間距每50mm可調。新型橫樑式中型貨架，每層承重最大可達至700kg；層板可選用鋼製、木製、高密度板等各種材料，規格任選。

客戶可按需求而訂做貨架之規格尺寸；較適合存放金屬構件；廣泛應用於製造業等行業。



Modular Shelving 中托貨架

Introduction

介紹

Plug-combination shelving with standard plugging allows easy installations. The steel boards are manufactured through one-time forming and the width can be adjusted easily. The loading capability is up to 300kg/layer. The layer boards can be arranged flexibly to form partitioned spaces. Labels or sorting cards can be inserted into card holders in front of each shelving. The layer height is adjustable at 50mm pace.

插接組合式結構·標準型配件·拆裝方便快捷·配合鋼層板使用·層板寬度可自由組合·每層承重可達至300公斤·層板可靈活分隔·層板前可插分類卡片·層高間距每50毫米可調。

Functions

功能介紹

1. Suitable for storage of small parts
2. A variety of accessories available to meet different needs
3. Optional sizes available

1. 適合細小零件
2. 大量配件配合不同需要
3. 不同尺寸可供選擇



Flow Racking 流利式貨架

Introduction

介紹

Also called slide racking, flow racking is a must for storage, distribution, and other logistics operations. Unlike ordinary racking, flow racking allows FIFO, saves storage space, helps improving efficiency, and is an ideal racking idea for Kanban management in production lines and logistics centers.

流利式貨架 (Flow Racking) · 又稱為滑移式貨架。流利式貨架 · 是儲存、配送等物流環節中不可缺少的設備 · 普通貨架只能單純地滿足擺放貨物的要求。相比之下 · 流利式貨架其獨特的結構可主動滿足先進先出的需求 · 更有效節約空間、提高工作效率等特性 · 是工廠生產線及物流中心的最佳選擇。

Functions

功能介紹

Flow racking consists of aluminum alloy shaft with rollers. It facilitates goods taking out or putting in and FIFO operation. Electronic indicators can be used for easier goods management. Goods enter at the high end of the racking and slide down to the low and along the rollers for being taken out. Flow racking is mostly used in production or assembling lines, and is suitable for storage of small or medium-sized parts or goods in circulation.

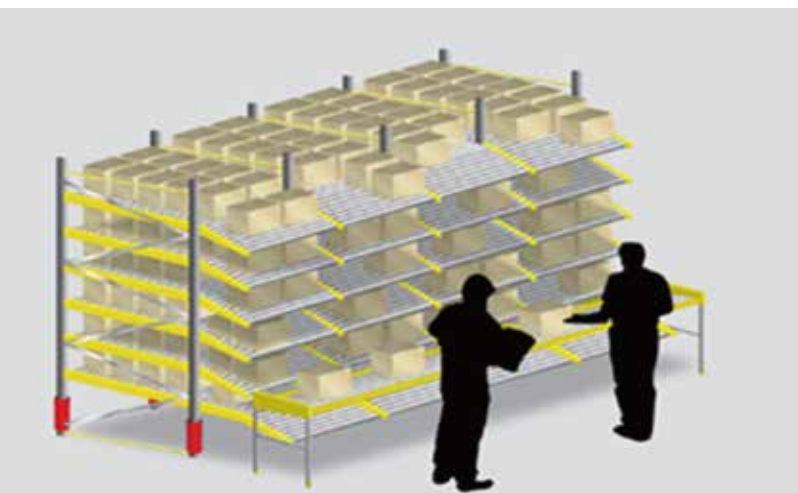
採用鋁合金的滾輪式流利條 · 利用貨物本身的重量 · 使貨物存取方便 · 並實現貨物先進先出 · 可配合電子標籤 · 使貨物在管理方面更輕鬆。流利式貨架的運作模式是物品從較高的一方存入 · 物品靠本身的重力沿滾輪下滑 · 在低的一方取貨。流利式貨架多採用於配合生產線、裝配線使用 · 適用於中小型及裝在零件盒或周轉箱中的貨物。



Flow Racking 流利式貨架

- Plug-in structure allowing easy installation and dismantling
- Holes punching on columns (50mm pitch)
- Adjustable layer height
- Allowing FIFO operation
- Suitable for goods picking and sorting in distribution centers
- Electrostatic spraying epoxy coating allowing longer service life
- Suitable for 5S management and FIFO operation in production lines and warehouse

- 採用插接式結構，便於安裝和拆卸；
- 立柱表面每隔50mm有沖孔間距；
- 每層可按該尺寸上下調節；能滿足貨物先進先出的理作；
- 適用於裝配中心、揀貨、理貨等場合；
- 表面靜電噴塗，美觀大方，使用壽命長；
- 配合生產線運作及倉庫存儲而符合五常法管理及先進先出之運作。



Mobile Shelving 移動式貨架

Introduction

介紹

Manual or electric operation mobile shelving enhances space utilization, tidiness and effective enclosed performance. This is suitable for document room, library, bank, hospital, and archive room in most companies.

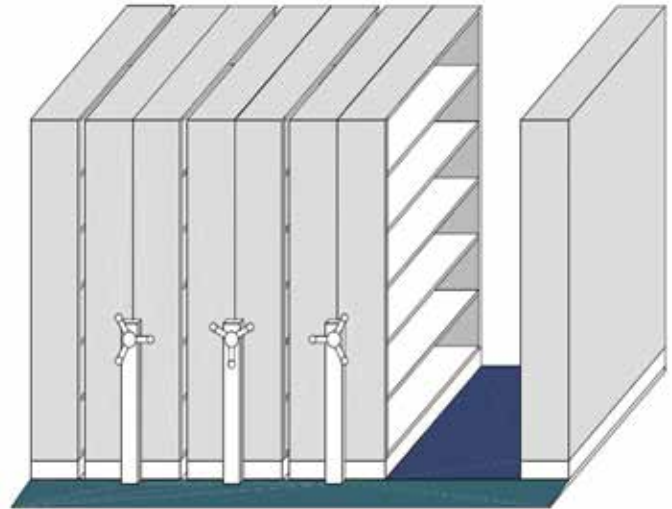
空間使用率高、美觀實用。可分為手動運作或電動運作兩種，主要適用於檔案館、圖書館、銀行、醫院、資料室等。

Functions

功能介紹

Mobile shelving is a fixed shelving equipped with chassis device. Only one aisle is needed for trolley picking and this allows higher utilization of storage space. With precision bearings utilized in the rotating system, the shelving ensures smooth and stable rotation. The layer height can be adjusted freely. There are control device and switch board on the shelving. Heavy-duty mobile shelving is designed for meeting requirements on size and loading capability for heavy goods. All columns enhance rib at the center to increase loading capability. The U-shaped front beams ensure connection between horizontal beams, columns, and enhance ribs.

移動式貨架是由固定式貨架底部加裝底盤組件組合而成，僅需設一條通道，便於運作員工或台車進入存取貨物，空間使用率較高；轉動組件採用精密軸承，轉動靈活平穩，層高可根據需求而自由調整；貨架設有控制裝置與操作開關盤以操作。移動式重型貨架同樣採用相同的立柱外形設計，但根據不同的負載需求採取相應的尺寸和強度設計，以達到最佳的需求配置。所有立柱中心設計有加強性，以確保安全的承載能力。貨架橫樑前端連接採取U形設計，確保裝配時橫梁、立柱和加強緊密及堅固的連接。



Mobile Shelving 移動式貨架

- Mobile shelving needs only one corridor, thus allows higher utilization of space. Light-duty, medium-duty, and heavy-duty shelvings are available
- For heavy goods, electric operation is recommended
- For light or medium-duty goods, manual operation is recommended
- Suitable for document room, archive room, library, drug room, bank, and refrigeratory
- 移動式貨架僅需設一條通道，空間使用率極高
- 根據承重可分成重型、中型和輕型三種
- 一般重型貨架採用電動式控制便於移動
- 輕型、中型一般採用手動式移動
- 廣泛應用於檔案館、資料室、圖書館、藥庫、銀行、冷庫等場所



Angle Steel Shelving 角鋼貨架

Introduction 介紹

This is a low-price shelving with flexible combination of steel or wooden panel boards and the loading capability is up to 150kg/layer.

配合鋼層板或木層板·每層承重可達至150公斤·組合方便·價格便宜。

Functions 功能介紹

This is simple in structure, elegant looking, easy installation and dismantling. The layer height is adjustable at every 50mm spaces and the maximum loading capability is 150kg/layer (with goods is applied which evenly distributed). Electrostatic spraying epoxy surface that is rust resistant and durable. This is suitable for supermarkets and corporate warehouses.

結構簡單、外形美觀、安裝拆卸方便；層高以50毫米為間距，便於調節高度，每層平均分佈狀態下承重最大可達150kg；角鋼貨架表面採用靜電噴塑處理，防腐防銹、堅固耐用；角鋼式貨架廠廣泛應用於超市、企業倉庫及事業單位。



Selective Pallet Racking 傳統橫樑式貨架

Introduction 介紹

It is the most frequently used storage system with plugging combination structure, optimized section design, and high-quality steel parts. Layer height is adjustable at 75mm space. This racking system is compatible with forklifts and enhances 100% goods picking face.

插接式橫梁立柱組合裝配結構，採用優化截面設計和高品質鋼材，層高每75毫米間距可便於調節高度，是現今最常用的倉儲系統。同時可配合各類叉車使用，傳統橫樑式貨架是客戶最理想的選擇。



Selective Pallet Racking 傳統橫樑式貨架



Drive-in Racking 駛入式貨架

Introduction 介紹

Drive-in racking is designed for large quantity storage of pallet goods of the same kind. Pallets are stored on supporting rail one after another. In this way, it is able to increase storage density and allows higher utilization rate of storage space. Drive-in racking is usually used in cases of expensive storage space, such as freezing warehouse, food, and tobacco industry.

駛入式貨架為儲存大量同類的托盤貨物而設計。托盤一個接一個按深度方向存放在支撐導軌上，增大了儲存密度，提高了空間使用率。這種貨架通常適用於儲存空間較昂貴的場合，如冷凍倉庫、食品和煙草行業等。

Functions 功能介紹

Drive-in racking optimized storage space utilization. It is particularly suitable for storage of standard unit of goods in industries requiring in/out of large quantity of goods with limited varieties. Goods can either be taken out at the same side of loading (FIFO) or can be taken out at the other side (LIFO) depending on customers' needs. Drive-in racking is a frequently used racking system for dense storage. Its space utilization rate is 50% higher than that of a common racking system. It is suitable for storage of large quantity with limited varieties, and high turnover of goods with FIFO needs forklift store in or take out pallet goods according to the path/rail loaded or retrieved.

利用最小的空間提供最大的存儲量，特別適合標準貨物單元的存儲，廣泛使用於存儲量大、品種少、進出庫頻繁的行業。貨物可以在同一側存入取出或者按照先進先出的要求，貨物從一側存入，另一側取出。駛入式貨架是一種常用的密集存儲貨架，比普通托盤貨架提高50%的空間利用率。適合少品種大批量貨物存儲。一般為先進後出，適合高周轉率的貨物。叉車駛入貨架通道存取托盤。



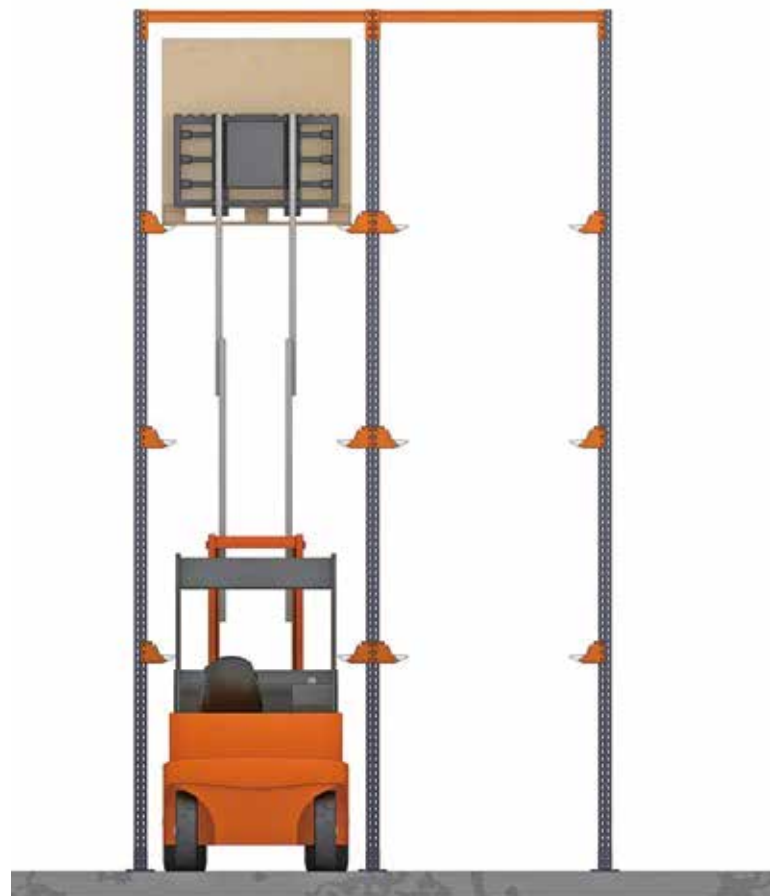
Drive-in Racking 駛入式貨架

Drive-in racking is suitable for loading and retrieval of large quantity of pallet goods with limited varieties. Except for goods stored in the cargo space next to the aisle, the rest of goods need to be load or retrieved using forklift. Therefore, it is recommended that a single lane of the racking system shall not exceed the length of 5 cargo spaces deep. Optional guiding rail can be applied to allow faster movement of forklift. With space utilization rate 50% higher than that of common cargo space racking, drive-in racking is extensively used in refrigerator, food, and tobacco industries.

- Goods are loaded and retrieved by forklifts
- Drive-in racking is a commonly used racking system for dense storage of goods
- Its space utilization rate 50% is higher than that of common pallet racking
- It is suitable for storage of large quantity of goods with limited varieties
- It is suitable for LIFO storage of goods with high turnover rate
- High space utilization rate, allowing maximum storage of goods in limited storage space
- Three major types of heavy duty racking
 - Continuous racking: the pallet storage area is also the path for forklift
 - Drive-in racking: Goods in/out at one side
 - Drive-out racking: Goods in/out at two sides
- Suitable for storage of large quantity of goods with limited varieties
- Working with counter balance forklift or reach truck operation
- Site utilization rate up to 60%

駛入式貨架採用托盤存取模式，適合少品種、大批量貨物的存儲。除了靠近通道的貨位，由於叉車需要進入貨架內部存取貨物，通常單面取貨建議不超過5個貨位的深度。為提高叉車的運行速度，可根據實際需要選擇配置導向軌道。與貨位式貨架相比，駛入式貨架比普通托盤貨架可提高50%的空間利用率，廣泛應用於冷庫及食品、煙草行業。

- 駛入式貨架是一種常用的密集式儲存貨架
- 比普通托盤貨架提高50%的空間使用率
- 適合品種類別少而大批量貨物存儲
- 一般為先進先出，適合高周轉率的貨物
- 叉車駛入貨架通道存取托盤
- 空間使用率較高，可在最小的空間實現最大的存儲量
- 三種常用重型托盤貨架
- 連續的貨架組成：托盤存儲區同時也是叉車通道
- 駛入式貨架：只能從一邊存取貨物
- 駛出式貨架：則能從兩端存取貨物
- 使用於存儲數量多、品種規格少的貨物
- 需配合平衡式叉車或前移式叉車使用
- 場地使用率可達到60%



Live Storage Racking 重力式貨架

Introduction

介紹

This is also called roller racking. The live storage racking features goods-in at high end through slanting rollers with specific position and direction while goods-out at low end utilizing the weight of cargo. This racking system allows FIFO and easy goods in/out. It is suitable for assembling lines, pharmaceutical, electronic factories, and distribution centers of fast moving goods industrial like supermarkets.

重力式貨架又稱輓輪式貨架；貨物從帶有斜度具有定位、定向的流利條上端存入，當在低端取貨時，貨物借助自身的重量自動下滑，從而達到儲存的目的，同時實現貨物的先進先出，使存取迅速方便；適用於生產裝配線、醫藥、電子、超市配發中心等場所。

Functions

功能介紹

Live storage racking is like a columnar system and designed with the requirements on size and loading capability for heavy goods. All columns are installed with enhancing ribs at the center for increasing the loading capability. The U-shaped front beam ensures connection between horizontal beams, columns, and enhancing ribs. Pallets are put on a slanting slide. When the outside pallet is taken away, the next pallet will slide down automatically. This is particularly useful in the case of high turnover goods. Live storage racking allows both FIFO and LIFO operations, and the space utilization rate can be up to 70%. We provide comprehensive solutions on heavy duty racking system to our customers.

重力式貨架同樣均採用相同的立柱外形設計，但根據不同的負載需求採取不同尺寸和強度設計，以達到最佳的需求配置。所有立柱中心設計有加強肋，以確保安全的承載能力。貨架橫梁前端連接採取U形設計，確保裝配時橫梁、立柱和加強緊密而堅固的連接。以托盤貨架為基礎，托盤存放在傾斜的滑道上。第一個托盤貨物取走後，後一個托盤貨物會自動滑至取貨區；特別適用於貨物周轉量大的情況下使用；可採用先進先出，也可以採用先進後出的存儲方式；場地利用率可達70%。可以為客戶提供全面重力式貨架設計方案。



VNA Racking 窄巷道貨架

Introduction 介紹

Special long span shelving added with guiding rail on the floor to be used with very narrow aisle forklifts. Reserved aisle width is around 1700-2000mm, significantly improving warehouses utilization.

特殊的橫梁式貨架，加配了地面導向軌道，配合窄巷道叉車使用，預留巷道寬度約1700-2000mm，大大提高倉庫使用率。



Structural Characteristics 結構特點

Very Narrow Aisle racking, or VNA racking, refers to regular long span shelving systems that use three-way forklifts. Comparing to regular pallet racking systems, the aisle width of VNA racking systems are much smaller, usually at around 1600-2000mm, improving space utilization by about 20%. Guided rails have to be fitted on the sides of the aisles so that three-way forklifts can operate.

窄巷道托盤式貨架又稱VNA貨架，專指常規橫梁式貨架系統選用的叉車為三向叉車時的系統，其與常規托盤式貨架系統相比，區別在於窄巷道托盤式貨架系統的巷道寬度要比常規托盤式貨架系統小的多，一般為1600-2000mm左右，空間利用率又提高了20%左右，另外在通道兩側必須設置導向護軌，以為三向叉車行駛導向之用。



Mezzanines Floor 閣樓式貨架

Introduction

介紹

This is suitable for small parts storage. To fully utilize the height of storage space and minimize operation area, mezzanines are widely utilized in logistics centers and automobile parts centers. This system can be designed to be a 2- or 3-layer structure.

There are 3 types of mezzanines

1. Shelving
2. Platform + shelving
3. Steel structural mezzanines

All parts of mezzanines can be assembled without welding. Unlike concrete or steelwork structures, mezzanines are lower cost with higher space utilization rate, because the lower layer of storage structure can also act as a support to the upper layer. The floor can be plain board, checkered iron, or punched steel plate, depending on needs of fire prevention, ventilation, or lighting. Forklift, hydraulic lift, or cargo elevator can be applied to load cargos. Small hand-pushing carts are usually used to move cargos.

適用於零件小的儲存。可以設計為兩層或三層結構，能夠充分利用空間高度、縮小作業範圍。在物流配送中心、汽車配件中心得到廣泛的使用。可設計2層或3層閣樓。

閣樓式可有三種方案：

- 1) 貨架
- 2) 貨架支撐平台
- 3) 鋼結構閣樓

閣樓整體結構為拼裝式，無須現場焊接，整體美觀、大方。與混凝土結構或型鋼結構相比，由於底樓貨架本身起到上面樓層的支撐作用，且具有成本低、空間使用率高的優點。樓面板有平板、花紋鋼板、沖孔鋼板等品種以適應防火、通風、光照等等不同使用要求。貨物上下樓層可選擇叉車、液壓升降台、貨梯等方式；貨物同層運輸通常使用小型手推車完成。

Functions

功能介紹

The system consists of racking and floor boards which can be easily installed for effective utilization of warehouse space and increased storage area. It is suitable for storage of light cargos with less demand on mobility. Parts boxes and tote boxes shall be applied in this system. The maximum loading capability of floor board is around 300kg/m. The floor is made of galvanized plates and other galvanized parts, which are light-duty and have an elegant appearance. On the steel structural mezzanine design can allow 1000kg/m loading. The system can be easily assembled or disassembled and the number of floors can be adjusted according to needs.

由橫梁式貨架和樓板搭建而成，安裝簡便。能有效利用倉庫的空間，增加儲存面積。適合流動性小、重量較輕的物品的存放。適合擺放輕質小型物件，也可與零件盒、周轉箱等配合使用。樓板最大承重300kg/m，由鍍鋅擱板及各類鍍鋅組建組成，質地輕巧美觀。但在鋼結構閣樓可設計承重力每平方1000公斤。全組裝式結構，組合靈活，裝拆方便。層數可根據需要任意增減。



Mezzanines Floor 閣樓式貨架



Drawer Racking 模具架

Introduction 介紹

Drawer racking with layer plates, track, and bearings is applicable for storage of dies and moulds.

抽屜式貨架配合層板·導軌及軸承·用於放置模具。

Functions 功能介紹

This is also called mould racking, and mainly used to store various dies and moulds. A crane (manual or electric) can be installed at the top. The roller track at the bottom can move freely even after the racking is loading. Positioning safety device ensures safety operation. Both light-duty and heavy-duty modes are available.

抽屜式貨架又稱模具貨架·主要用於存放各種模具物品; 頂部可配置移動葫蘆車(手拉或電動)·抽屜底部置有滾輪軌道·承載後依然用很小的力但仍自如地拉動·附加定位保險裝置·安全可靠; 根據承載能力可分為輕量型、重量型兩種。



AS/RS System 自動化倉庫

Introduction

介紹

Automatic cargo handling and warehouse information management system can be realized through utilization of intensive racking, stacker, transport system, computer system, laser positioning system, ultra-red communication, site bus control technology barcode scanning, RF system, and information exchange between WMS and ERP systems.

密集型的橫梁式貨架系統配合堆垛機·輸送系統·計算機管理系統·並應用激光定位系統·紅外線通訊·現場總線控制技術·條形碼掃描·RF系統等先進技術·WMS系統和ERP系統信息互換·實現搬運存儲自動化·倉庫管理信息化的功能。

Functions

功能介紹

By utilizing protocols, WMS and ECS communication, and site bus network consisted of controllers, all conveying equipment and automatic transport of cargoes can be well controlled at offline state.

採用協議與WMS和ECS通訊·採用控制器組建的現場總線網絡·可在離線狀態下調度所有輸送設備·完成物料的自動輸送。



AS/RS System 自動化倉庫

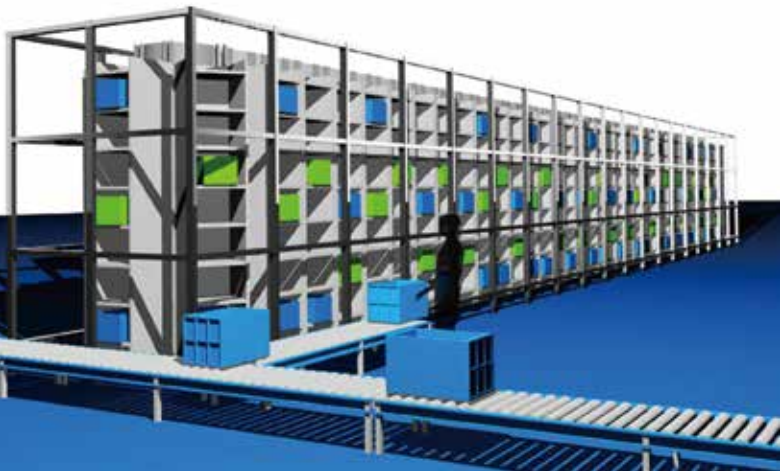
We provide our customers with the following solutions on automatic and 3-D warehousing operations:

- Planning Consultancy: Factory logistics planning/ logistics operation planning, fast logistics diagnosis, Logistic system design, logistics center design, warehouse design, suggestions on logistics optimization, work flow planning, land and construction demand planning
- Engineering Service: System integration and implementation covering logistics distribution center, automatic 3-D warehouse, automatic logistics control, and automatic warehouse information management system
- Logistic Information Management System: Logistics and warehousing, manufacturing support, order distribution, transportation, and other applications for manufacturing, retail, and 3PL industries. Our services include logistics flow optimization, logistics information suite, supporting LEAN-based management model, logistics information system for order distribution in retail industry, and automatic cargo handling and information system
- Turn-key Subcontracting: Design, manufacturing, installation, testing, service, control, and management

在自動化立體倉庫方面，為客戶提供以下方案：

- 規劃諮詢：工廠物流設施 / 物流作業規劃、快速物流運作診斷服務、物流系統設計、物流中心設計、倉庫設計、物流運作優化建議、作業流程規劃、倉庫土建建設需求規劃
- 工程服務：提供涵蓋物流配送中心、自動化立體倉庫、自動物流控制系統和自動化倉庫信息管理系統的系統集成與實施服務
- 物流信息管理系統：配合製造、零售和第三方物流的自動化倉庫系統應用，如物流倉儲、支援生產、訂單配送和運輸等，各種業務運作。我們專業提供物流流程優化、基於精益生產管理模式的製造支援物流信息系統、零售業訂單配送型物流信息系統、物料搬運自動化和物流信息系統實施等服務
- 項目總承包：設計、製造、安裝、調試、服務或控制及管理系統





As a leading storage system integrator in China, Shanghai Weixin has been dedicated in development and application of new storage technology and introduction of world-leading storage technology and management models to our customers.

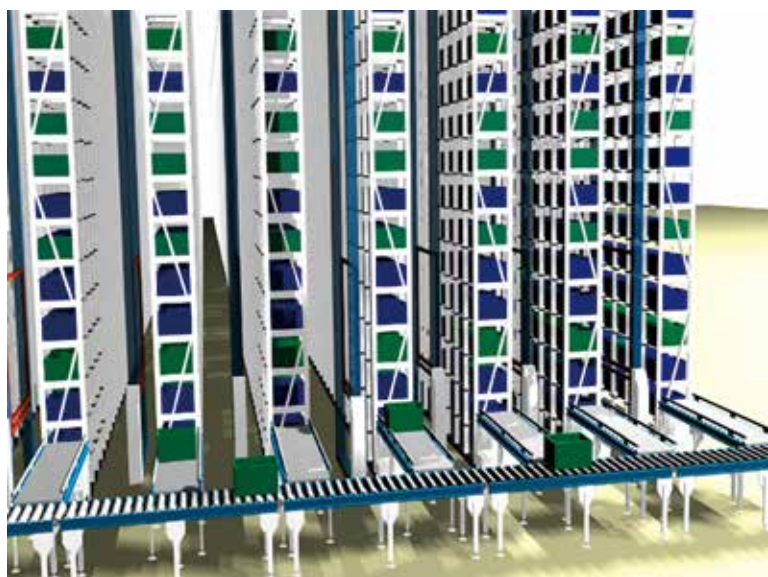
We and our partners have designed and completed installation of advanced automatic warehouses and logistic systems for customer in automobile, papermaking, garment, and other industries in China. From design to planning, implementation, and system test, we provide comprehensive and turn-key solutions to our customers.

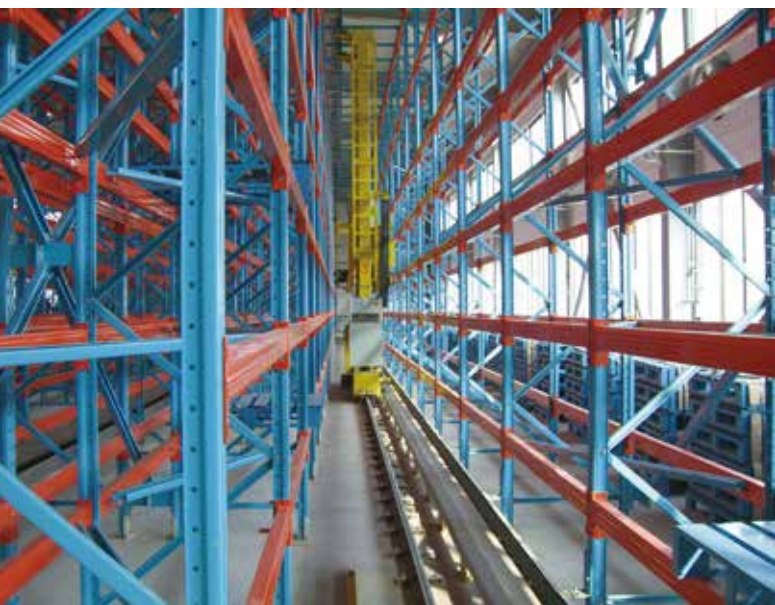
In recent years, we have developed a series of industry-leading warehouse logistics systems based on our experiences and learning from our competitors. These systems include warehouse information management system warehouse and logistics simulation software, visual monitoring and control software, stacker conveyor control system, barcode identification and tracking system, automatic cargo-handling robot, automatic robot, automatic cargo-handling cart, high-speed goods sorting system, stacker address identification system, stacker control system, cargo position detector, height detector, automatic conveying system, and stacking system for various industries.

上海威鑫倉儲設備有限公司作為國內領先的倉儲物流系統集成商，公司專注於物流倉儲領域新技術的開發與應用，力求為廣大客戶引入現今世界最先進的物流技術與最新的管理理念。

上海威鑫倉儲設備有限公司及其技術合作伙伴，已經在全國範圍內規劃、實施了多座高技術含量的自動化倉庫和自動化物流系統。涉及行業包括汽車、造紙、服裝等行業。從設計規劃、工程施工、系統調試，上海威鑫倉儲設備有限公司提供完整而領先的解決方案。

近年來，上海威鑫倉儲設備有限公司在引進和經驗的基礎上開發了一系列行業領先的倉儲物流管理系統和相應的配套設施，包括：適合不同行業的倉庫信息化管理系統、倉儲和物流系統防真軟件、圖形監控和調度軟件系統、堆垛機輸送機控制系統、條形碼識別跟蹤系統、自動化搬運機器人、自動機械手、自動搬運車、高速貨物分揀系統、堆垛機檢測系統、堆垛機控制系統、貨位探測器、自動輸送系統、堆垛機系統。





Cantilever Racking 懸臂式貨架

Introduction 介紹

Cantilever Racking consists of a single-side or double-side cantilevers which is made of special sectional steel. It is suitable for storage of long materials. Generally speaking, the length of cantilever is less than 1.5 meter, and the loading capability is less than 500kg per support arm.

選用特種型材立柱，有單面和雙面的高強度懸臂，適用於儲存各種長型物料，一般懸臂長度不超過1.5米，承重不超過500公斤/臂。



Functions 功能介紹

Cantilever Racking is suitable for storage of long materials such as section material, pipes, boards, and cables. The columns are made of H-steel or cold rolling steel, and the arm is usually made of square pipe, cold rolling steel, or H-steel. The arm and columns are connected using plugs or bolts. The base and columns are connected using bolts. The height of arm is adjustable. Cargoes are stored/taken out using forklift, cart or manually. The height of the rack is usually less than 2.5 meter up to 6 meter if forklift is used) and the length of the arm is less than 1.5 meter. The loading capability of each arm is less than 500kg. Cantilever racking is widely utilized in machinery manufacturing factory and construction material store.

懸臂式貨架主要用於存放長形物料，如型材、管材、板材、線纜等，立柱多採用H型鋼或冷軋型鋼，懸臂採用方管、冷軋型鋼或H型鋼，懸臂與立柱間採用插接式或螺栓連接式，底座與立柱間採用螺栓連接式，懸臂層高可調。貨物存取由叉車、行車或人工進行。貨架高度通常在2.5米以內(如由叉車存取貨則可高達6米)，懸臂長度在1.5米以內，每臂載重通常在500kg以內。此類貨架多用於機械製造行業和建材行業等。



Racking Components 貨架配件

Introduction

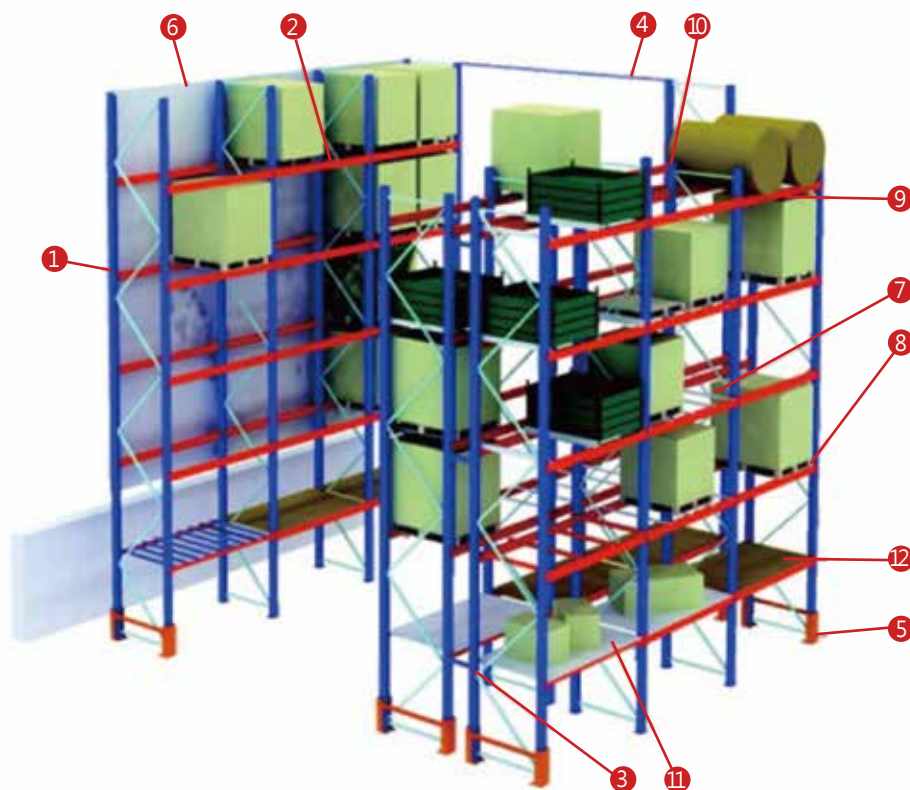
介紹

Parts:

1. Bracing
2. Beam
3. Frame
4. Corridor connector
5. Column guard
6. Back panel
7. Support bar
8. Fork entry bar
9. Barrel block
10. Back stopper
11. Steel panel
12. Wooden panel

組成零件:

1. 橫斜撐
2. 橫梁
3. 柱片
4. 巷道連接杆
5. 護角
6. 背擋板
7. 擱擋
8. 導叉擱擋
9. 桶裝墊塊
10. 背擋
11. 鋼製層板
12. 木製層板





BPS Global Group 威裕環球集團
7/F, SML Tower, 165 Hoi Bun Road, Kwun Tong, Kowloon, Hong Kong
香港九龍觀塘海濱道165號7樓
☎ (852) 2763 6874 ☎ (852) 2343 2021
🌐 www.bps-group.net ✉ enquiry@bps-group.net