



# CAPABILITY STATEMENT



# About Us

Founded in 1992, BPS Global Group is a leading provider of construction and logistics infrastructure headquartered in Hong Kong. With expanding footprints throughout Asia, BPS Global has fortified offices in Shanghai, Guangzhou, Shenzhen and Singapore.

BPS Global has been privileged to work on some of the most recognizable and high-profile commercial buildings and industrial projects in Hong Kong, China and Asia Pacific. We have earned recognition for undertaking large, complex projects, fostering innovation, embracing emerging technologies to improve efficiency and enhance clients' value, winning their faiths.

Through completing numerous large complex projects, BPS Global accumulated considerable construction and project management experience and has gradually groomed into a key player in the field of Design and Build projects. We possess the unique ability to take construction

projects from feasibility to design, on site, completion and after services. Constantly involving in both new build and refurbishment projects including offices set-up, logistics hub set-up, warehouse fit-out, property conversion, structural engineering works, alteration & addition works and new building works for building projects, keeps us a notch above our competitors.







Our extensive experience in each and every realm is driven by the breadth and depth of our qualified teams, all who take pride in doing the best possible job for our clients.

We have particular expertise in:

- Managing multi-stakeholder projects
- Complex and fast-track projects

## Our Services

We are offering a wide array of high-end, professional construction and building services including:

-  New Build
-  Alterations & Additions
-  Fitting Out
-  Design and Build
-  Building Services
-  Project Management

## Markets Served

At BPS Global, we have a long-standing and unrivalled experience in providing quality services across a range of sectors, including:

-  Commercial
-  Logistics
-  Technology and Healthcare
-  Retail
-  Hospitality and Leisure
-  Government, Public Sector and Education

# Accreditations and Licences

BS Engineering and Consultancy Company Limited, a member company of BPS Global Group, has been a Registered Minor Works Contractor under the Building Authority since 2011. In 2013, BS Engineering and Consultancy Company Limited also becomes a Registered General Building Contractor. We are authorized to carry out A&A works, which also includes general building works under the Buildings Ordinance. In addition, BPS is also accredited with the ISO 9001:2015 quality management system standard, the ISO 14001:2015 environmental management system standard and the OHSAS 18001:2007 management system standard.



ISO 9001:2015  
ISO 14000:2015  
OHSAS 18001:2007



Certificate of Registration  
of Electrical Contractor



Registered General Building Contractor



Registered Minor Works Contractor

# Accreditations and Licences

We are government works bureau approved contractors for Public Works for contracts of value up to HK\$100 million.

What's New

Issues in Focus

About Us

Publications and Press Releases

Legislative Council Matters

Boards and Committees

Construction Sector Matters

Public Forms

Access to Information

Accessibility of Government Premises, Facilities and Services

Links

Job Vacancies

Tender Notices

Contact Us

## List of Approved Contractors for Public Works

Firms included in the List are published below for general information. The List may include contractors who at the present time are suspended from tendering for public works contracts. Contractors in the List, unless suspended, may tender for public works contracts only in the works categories and groups for which they are approved.

'A' denotes Group A for contracts of value up to \$100 million

'B' denotes Group B for contracts of value up to \$300 million

'C' denotes Group C for contracts of any values exceeding \$300 million

'P' denotes probationary status in the category indicated.

Category :

Group :

Position as at 29 Jul 2018

Total No. of Matched: 102

Contractor Name	Buildings	Port Works	Roads and Drainage	Site Formation	Waterworks
An Hsin Construction Company Limited	AP	-	-	-	-
Arbat Construction Company Limited	-	-	BP	BP	A
Asian (Ah Chi) Engineering and Construction Works Limited trading as Asian Construction Company	AP	-	-	-	-
Bestrich Engineering Limited	A	-	-	-	-
Bordon Construction Company Limited	CP	-	AP	-	-
<b>BS Engineering &amp; Consultancy Company Limited</b>	AP	-	-	-	-
Build King Civil Engineering Limited	A	-	C	BP	-
Chan Sum Construction Company	AP	-	-	-	-
Chau Mou Engineering & Company	-	-	-	-	AP



Member of The Hong Kong Construction Association



Building Services Engineering Engineering Graduate Training Scheme "A"



# Asia Logistics Hub-SF Centre, Hong Kong



Logistics



## Client

S.F. Express

—

## Scope of Work

Fitting Out  
Design and Build  
Building Services  
Project Management  
Real Estate Agency

—

## Location

Tsing Yi, Hong Kong

TYTL 180 Logistics Centre is strategically located at the heart of Tsing Yi, immediately adjacent to Container Terminal 9 and Stonecutters Bridge, offering easy access to arterial roads and major business districts. This project mainly involves the interior construction of 3 levels of a 16 story warehouse facility into a contemporary multi-functional space that features a harmonious blend of minimalist and industrial aesthetics. The site encompasses flexible and agile working space, engineering maintenance rooms, CCTV security control room, and high-value parcel storage areas. Our work also includes incorporating energy efficient active system to the facility, which comprised of the installation of energy-efficient zoning cooling system and task-lighting at specific work areas. Such new features can greatly reduce energy usage and carbon footprint for the facility.

This project has been given a very pressing work schedule of nine months to completion. One of the main challenges of this project is to incorporate new green features into the existing Building Management System, which drastically increased the complexity of the project. Confronted with numerous challenges, the project team demonstrated their unwavering determination and the attitude of pursuing excellence to complete the project as planned schedule. Upon completion of the interior construction project, the site is able to provide a more comfortable working environment for staff thereby enhancing their efficiency.

# Distribution Centre, Hong Kong



Logistics



## Client

Goodman

—

## Scope of Work

Alterations & Additions  
Fitting Out  
Building Services

—

## Location

Fanling, Hong Kong

Goodman is an integrated property group that owns, develops and manages industrial property and business space globally. It invests in business parks, office parks, industrial estates and warehouse and distribution centres. In order to provide quality industrial and logistics space, Goodman chose the BPS Global Group to carry out property upgrade and building refurbishment for 5 buildings at Fanling, Tuen Mun, Shatin, Tsuen Wan in 2007-2009. The projects include lift lobby upgrade, internal & external wall painting, office upgrade, spalling repair and reinstatement work, etc.



# Kwok Kee Group Centre, Hong Kong



Mixed-Use



## Client

Kwok Kee Group

## Scope of Work

Alterations & Additions  
Fitting Out  
Building Services

## Location

Kwun Tong, Hong Kong

With the growing trend of building revitalization and alteration, Kwok Kee Group appointed BPS Global Group to undertake a revitalization project in Kwun Tong. It is an alteration and addition works for no. 107, How Ming Street and is completed successfully. The main objective of this project is to convert one of her old industrial buildings into a multifunctional complex, encompassing F&B, retail outlets and offices. With a focus on the re-design and planning for interior and external facade, the whole building is rebranded with a whole new image and upgraded its market value.

The 9-storey industrial building has a total floor area of about 70,000 square feet. In line with the customer's intention to use it for retail purposes, the low-rise floors are specially converted into shops and some supporting ancillary facilities, such as escalators, fire escape routes and adequate parking spaces are added accordingly.



# Pharmaceutical Products Distribution Centre, Hong Kong



Healthcare





# Pharmaceutical Products Distribution Centre, Hong Kong



Healthcare



## Client

DKSH

—

## Scope of Work

Design and Build  
Building Services  
Project Management  
Logistics Automation  
High Density Storage Solutions  
Picking Optimisation

—

## Location

Tsing Yi, Hong Kong

BPS Global developed a smart automated warehouse in Hong Kong for DKSH, the leading Market Expansion Services provider in Asia. The facility performs secondary repacking, storage and distribution for pharmaceutical goods. The solution addresses DKSH's challenges, including tight man power supply, increasingly stringent regulatory requirement and ever dynamic customer expectation in the market.

BPS Global tailor-made a smart logistics system by integrating carousel storage, mobile robot technology, drop-to-light panel and conveying system for goods-to-person order fulfillment. Automation is a breakthrough in the relatively conservative pharmaceutical and health care logistics industry. Another key feature of the solution is its full compliance with the related GMP/GDP/WDL/CSV statutory requirement stipulated by Department of Health and World Health Organization.

This solution demonstrates that smart logistics automation does not only apply in purposely-built construction but also smartly affordable for SMEs in conventional buildings. By adopting the modular system integration approach, clients can easily re-engineer the automation products they have invested in, having the devices fitted into their future business models or relocated to other sites, which is common in Hong Kong for its short lease period. BPS solutions have also been well-received in a variety of industries, such as e-commerce, mini-stores, freight forwarding, etc, with stories of success being created and expanded in various Asia Pacific countries.

# Nanjing Binjiang Modern Logistics Centre, China



Master Planning



## Client

CITIC Capital

—

## Scope of Work

Investment Management  
Project Management

—

## Location

Nanjing, China

BPS Global Group and CITIC Capital has joined forces to sharpen the growth focus within the Chinese logistics real estate market since 2017. Nanjing Binjiang Modern Logistics Centre, one of a series of logistics hub that BPS Global Group and CITIC Capital is building across China, will provide international standard logistics infrastructure to both locally and globally focused companies operating in China. This is also the first project to start after the collaboration agreement signed between BPS and CITIC Capital for close cooperation on developing and expanding the Chinese logistics real estate market. On top of traditional warehousing and logistics operations, the modern logistics centre was also designed specifically for e-commerce, light manufacturing and other high value-added services.

# Ski Resort Hotel, Hokkaidō, Japan



Hotel & Retail



## Client

Hirafu Capital

—

## Scope of Work

Project Management

—

## Location

Hokkaidō, Japan

In 2017, BPS demonstrates its outstanding expertise in managing overseas projects through the construction of the luxurious ski resort hotel in Hokkaidō, Japan. The hotel is set to open in H2-2018. As the project manager in this project, it marks as a new footprint of the Group throughout Asia.

Hokkaidō is famous for its stunning natural scenery, which attracts outdoor enthusiasts all over the world and earns the reputation of paradise for skiers and snowboarders.

The large-scale resort development project is located in a popular ski spot in Hokkaido, Japan. The involved resort hotel features contemporary designed rooms with private onsen in each accommodation, a gym, restaurants, lounge, multipurpose function rooms and both indoor and outdoor public onsen pool.



# Mind-friendly Home Exploration Centre, Hong Kong



Government



## Client

Hong Kong Housing Society

—

## Scope of Work

Fitting Out  
Project Management  
Building Services

—

## Location

Yau Ma Tei, Hong Kong

BPS Global is proud to be awarded the project of fitting out work for Mind-friendly Home Exploration Centre by the Hong Kong Housing Society. The centre in Yau Ma Tei aims to showcase home design specialised for people with dementia. Taking advantage of specifically designed home decorations and latest technologies, the centre aims to act as a demonstration for friendly home environment for patients. Multi-purpose seminar room and information station are also included in the centre for regular guided tour and open to visitors.

# Cathay Pacific Cargo Terminal New Compound & Airline Offices, Hong Kong



Aviation



**Client**

Cathay Pacific Services Limited

**Scope of Work**

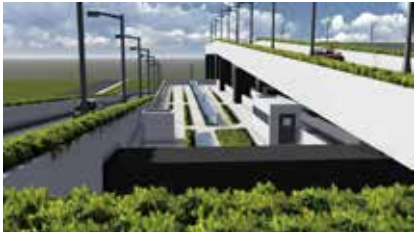
- New Build
- Alterations & Additions
- Fitting Out
- Design and Build
- Building Services

**Location**

Chek Lap Kok, Hong Kong

Cathay Pacific Airways has secured the franchise of a third air cargo terminal at Hong Kong International Airport. As a result, Cathay Pacific Airways had formed a wholly owned subsidiary (CPSL) to build and operate the facility in the new compound & airline offices.

This is a design & Build project to construct a 2-storey building. The new compound office shall be located at the Exit Ramp which comprised airline offices & staff facilities in the new office building of the Cathay Pacific Air Cargo Terminal, and the size is 3,000 sqm.



# New Shun Hing Centre, Hong Kong



Commercial



## Client

Shun Hing Group

—

## Scope of Work

Project Management

—

## Location

Kwai Chung, Hong Kong

In 2015, Shun Hing Group has embarked on the construction of a new building in Kwai Chung. The building will provide approximately 120,000 square feet to meet the needs of their growing employee population and future development. BPS Global is responsible for providing project management service throughout the execution of the new building project. Our project team comprises multi-disciplinary staff of professionals with extensive experience on all phases of the functions and responsibilities required throughout the execution of the project. The BPS project team is also responsible for resolving the constraints identified in the project and delivering projects to successful completion.

The 17-storey new corporate building is scheduled for completion in 2018. BPS Global Group is committed to work closely with our client to ensure the quality and workmanship is in-line with the client's requirements while delivering the project on time and within budget.



# 3-storey Boat House, Hong Kong



Education



## Client

Hong Kong University of Science and Technology

—

## Scope of Work

New Build  
Building Services  
Project Management

—

## Location

Clear Water Bay, Hong Kong

BPS Global Group has been awarded a contract by a leading University, the Hong Kong's premier institution, for the construction of the Water Sports Centre Development at Seafront (Phase II). This project marks as the second major partnership with this Asia's third ranked University. BPS Global is responsible for the construction of a 3-storey complex that is composed of an administrative office, a verandah, a central storage for various types of boats and equipment and other ancillary facilities.

